

# Ohio County Farm & Home News

Cooperative  
Extension Service

Ohio County  
P O Box 66  
Hartford KY 42347  
270-298-7441  
<http://ohio.ca.uky.edu/>

## “HEART OF AMERICA GRAZING CONFERENCE” – OCT 15, 16, & 17



The University of Kentucky is proud to announce the 2024 Heart of America Grazing Conference in Elizabethtown, Kentucky! The three day event will take place throughout Central Kentucky and include some dynamic speakers on all things regenerative agriculture. The Heart of America Grazing Conference is an annual conference rotated around the mid-Atlantic and southeast region.

On Tuesday, October 15, you can attend a “Pasture Ecology Workshop” at Glenmar Farms, in Cecelia, Kentucky. We will be doing a deep dive into all things related to ecological systems and welcoming Dr. Matt Poore from North Carolina State University. Also on Tuesday, October 15 we will be having the Heart of America banquet. We look forward to recognizing individuals dedicated to promoting regenerative agriculture and supporting our mission.

Wednesday, October 16, will be the “Heart of America Grazing Conference” at the Hardin County Extension Office in Elizabethtown. You will hear from many industry and University experts discussing all things regenerative agriculture, soil health, and pasture ecology. Topics to be covered are:

- “Healing the Land with Grazing” – Ray Archuleta

- “Soil Health – Separating Fact from Fiction” – Alan Franzlebbbers, USDA Ag Research
- “Bale Grazing for Biological Fertility & Healthier Pastures” – Greg Halich, U.K.
- “My Regenerative Journey” – Sam Kennedy, Kettle Mills Livestock, TN
- “Build It & They Will Come – Managing Soil Life” – Chris Teutsch, U.K.
- “Putting It All Together” – Matt Poore, North Carolina State University

On Thursday, October 17, you can visit Greg Brann’s Big Springs Farm in Adolphus, Kentucky. Join us to see a well-established multi-species grazing operation with one of the nation’s foremost experts on soil health.

Come to any one or all three of the events. Go to the UK Forage Website and click under Events or use this direct link to register:

<https://www.eventbrite.com/e/2024-heart-of-america-grazing-conference-tickets-920965361187>

## “RINSE & RETURN” PESTICIDE CONTAINER RECYCLING – SEPT. 18<sup>TH</sup>



We will have our second “Rinse & Return” Pesticide Container Recycling program next Wednesday, September 18 at AgriGro Farm Center, from 9:00 a.m. till 11:00 a.m.

Cooperative  
Extension Service

Agriculture and Natural Resources  
Family and Consumer Sciences  
4-H Youth Development  
Community and Economic Development

MARTIN-GATTON COLLEGE OF AGRICULTURE, FOOD AND ENVIRONMENT

Educational programs of Kentucky Cooperative Extension serve all people regardless of economic or social status and will not discriminate on the basis of race, color, ethnic origin, national origin, creed, religion, political belief, sex, sexual orientation, gender identity, gender expression, pregnancy, marital status, genetic information, age, veteran status, physical or mental disability or reprisal or retaliation for prior civil rights activity. Reasonable accommodation of disability may be available with prior notice. Program information may be made available in languages other than English. University of Kentucky, Kentucky State University, U.S. Department of Agriculture, and Kentucky Counties, Cooperating. Lexington, KY 40506



Disabilities  
accommodated  
with prior notification.

This is an excellent program for disposing of your 5 gallon and smaller pesticide containers. By recycling the containers, new products can be made from the plastic.

To participate simply:

- Triple rinse the containers as you empty the chemical, so residue is removed
- Remove label and container caps and dispose of them. The caps are a different type of plastic.
- Tie a string thru 15-20 containers for easy loading and it prevent the containers from blowing out of the pickup
- Bring containers to collection on September 18<sup>TH</sup>

## RETURN OF THE FALL ARMYWORM

In 2021, Kentucky was one of many states that were impacted by a historic outbreak of fall armyworms. That year marked perhaps the worst year for the pest since the 1970's and has inspired fear and dread about these hungry, hungry caterpillars rearing their head again. In the past week, reports from western and central Kentucky have indicated that some folks are seeing egg masses and fall armyworms in turfgrass areas. The sudden onset of fall armyworm in 2021 created temporary shortages of effective insecticidal remedies. Reports from UKY entomologists indicate we are not at the same levels as in 2021, but it is prudent to review how this pest works and what can be done about it.

- **Fall armyworm and Kentucky**

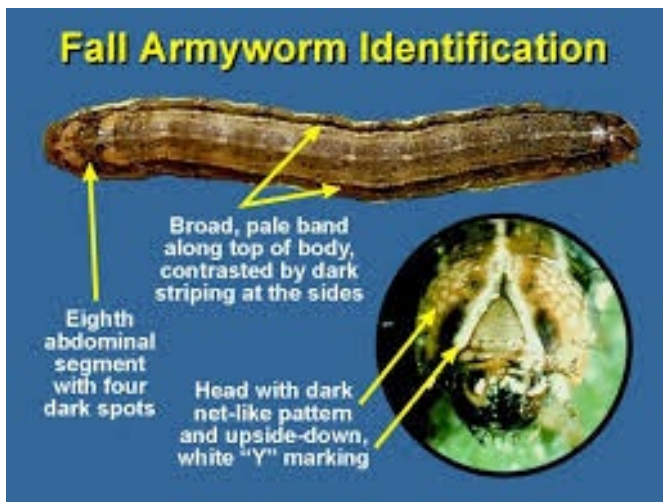
Fall armyworms do not overwinter in this state. They are a tropical species, and they typically overwinter in southern Florida and southern Texas. These spots stay warm enough for them to persist and then mate to start the generations that will migrate northward as moths. They usually move from these warmer states into states like Mississippi and Alabama in April and May, arriving next in Tennessee by May or June. Typically, they start to appear in Kentucky by June.

In the bluegrass state, fall armyworms are usually associated with issues in pastures and crops. In this state and others, they will cross over into the home landscape to feed on turf in lawns. Initially when they feed, the tips of the blades of grass will have windowpane-like damage. As the caterpillars grow, they will progress into consuming whole blades of grass. The term "armyworm" also comes from the fact that these pests move in a group across the grass, creating a distinct line of damage opposed to undamaged grass. Newly planted sod is more susceptible to being killed by these pests than established turf areas.

- **What should you do now?**

Keep a close watch on your pastures/hayfields for egg masses and armyworms over the next few weeks. Egg masses may be laid on any outdoor surface and have a fuzzy covering. The eggs themselves are small and round, less than 1/8 inch in diameter.

If you have 2-4 caterpillars per square foot or more, then you should consider spraying. In other words, these numbers will likely mean you will have considerable damage to late summer/fall growth in your pastures and hayfields. Fall armyworms have a characteristic inverted 'Y' on their headcap.



Fall armyworm is a sporadic late summer fall pest of alfalfa and mixed stand pastures. Best time to scout for this pest is in the early morning as they hide from the sun at mid-day. Soapy water drenches can be used to flush larvae from the soil at any time. Control should be considered if 2 to 4 larvae per square foot are found.

A potential alternative to insecticide application for hay crops near harvest stage, is to mow the crop IMMEDIATELY. Unfortunately, waiting 2 or 3 days for good curing conditions is not an option since armyworm defoliation is so rapid. Once cut, the conditions in the mowed forage become less conducive for the armyworm.

Check with your ag supplier about their current availability of insecticides. Pyrethroids such as Warrior work best on small larvae (less than 3/4 inch), while diamides such as chlorantraniliprole works better on larger ones. Always be sure that the crop to be protected is on the label of the pesticide to be used.

In terms of the future, fall armyworm will remain a threat until the first frosts of the fall. Cold weather in the fall and winter kills this insect. It can only overwinter in the extreme southern parts of the United States and re-infests the state each summer.

Fall Armyworm Insecticides	MOA Group	Graze/harvest – Pre Harvest Interval (days)
carbaryl - Sevin XLR, Sevin 4F, etc.	1A	7 for alfalfa (May temporarily bleach tender foliage) 14 days for pasture and grasses for hay
methomyl - Lannate	1A	7 days for grazing or hay (alfalfa)
bifenthrin – Brigade 2E	3A	Not for use on alfalfa 30 days for forage and hay
<i>b</i> -cyfluthrin - Baythroid XL (1 <sup>st</sup> and 2 <sup>nd</sup> instars only)	3A	1 day forage 7 days for hay (alfalfa) 0 day forage, 7 days for hay (pasture grass)
<i>g</i> -cyhalothrin – Declare, Proaxis EC	3A	1 day forage 7 days for hay (alfalfa) 0 day forage 7 days for hay (pasture grass)
<i>l</i> -cyhalothrin – Warrior II	3A	1 day forage 7 days for hay (alfalfa) 0 day forage, 7 days for hay (pasture grass)
<i>a</i> -cypermethrin – Fastac EC	3A	3 days for cutting or grazing (alfalfa)
<i>z</i> -cypermethrin – Mustang Maxx	3A	3 days for cutting or grazing (alfalfa) 0 days for cutting or grazing (grass forage and hay)
permethrin – Ambush, Permethin 3.2 AG	3A	0 or 14 days depending on rate used (alfalfa only)
pyrethrins - PyGanic	3A	0 day forage/harvest
<i>Spinosad</i> - Entrust	5	0 days for forage, 3 days for hay
Bt products - Agree WG, Biobit HP, DipelDF, Javelin	11	0 days
methoxyfenozide – Intrepid 2 F	18	0 day forage, 3 days for hay (alfalfa) 0 day forage, 7 days for hay (Grass forage, fodder and hay)
chlorantraniliprole – Coragen, Prevathon, Vantacor	28	0 day alfalfa 0 day for grasses grazing or hay

# UPCOMING Events

- August 29 - KATS Field Crop Pest Management & Spray Clinic; U.K. Research & Education Center
- October 15 – Pasture Ecology Workshop, Glenmar Farm, Cecelia, KY
- October 16 – Heart of America Grazing Conference; Hardin Co. Extension Office, Elizabethtown; 7:00 a.m. till 3:00 p.m. ET
- October 17 – Pasture Walk – Gregg Branns Big Springs Farm; Adolphus, KY